

CONDENSED SPEC SHEET*

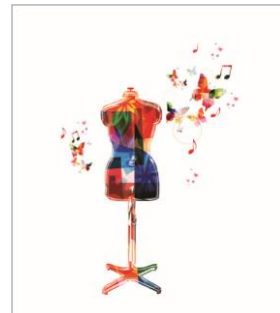
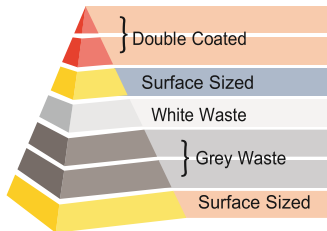
Grade Name: ECO NATURA

| SUBSTANCE (GSM) | CALIPER (μ M) | STIFFNESS-L&W (mN) | | |
|---------------------------------|----------------------------|--------------------|-----|-------------|
| | | TAPPI T556 | | |
| | | MD | CD | GM |
| TAPPI T 410 | TAPPI T 411 | | | |
| 230 | 304 | 123 | 58 | 84 |
| 250 | 330 | 163 | 73 | 109 |
| 260 | 343 | 175 | 81 | 119 |
| 270 | 356 | 193 | 88 | 130 |
| 280 | 370 | 216 | 97 | 145 |
| 285 | 376 | 226 | 104 | 153 |
| 290 | 383 | 236 | 112 | 163 |
| 300 | 396 | 256 | 123 | 177 |
| 320 | 432 | 318 | 150 | 218 |
| 330 | 446 | 340 | 165 | 237 |
| 340 | 459 | 386 | 183 | 266 |
| 350 | 473 | 403 | 193 | 279 |
| 360 | 486 | 427 | 210 | 299 |
| 370 | 500 | 458 | 220 | 317 |
| 380 | 513 | 486 | 230 | 334 |
| 390 | 527 | 513 | 240 | 351 |
| 400 | 540 | 553 | 259 | 378 |
| TOL: \pm 4% | \pm 5% | | | -15% |

| PARAMETER | UNITS | VALUE |
|--|------------------|------------------------|
| ROUGHNESS - BENDTSEN | ml/min | 50 Max |
| PLYBOND | J/m ² | 150 Min |
| IGT - DRY PICK- (Medium Viscosity) | m/sec | 0.7 Min |
| BRIGHTNESS ISO | % | 77 Min |
| GLOSS at 75° (avg.) | % | 40 Min |
| MOISTURE 230 - 300 GSM 300 - 400 GSM | % | 6.5 - 8.0 7.0 - 8.5 |
| COBB (60 sec) | TOP | 50 Max |
| | BOT | 100 Max |

| CERTIFICATIONS & COMPLIANCES | |
|------------------------------|--|
| Manufacturing | ISO 9001, ISO 14001, ISO 45001 |
| Environmental & Safety | FSC® CoC, PCF, CII GreenCo Platinum, SMETA 4 Pillar |

CONSTRUCTION



Note :

1. All Properties are according to ITC PSPD Measurements
2. Test Climate 23°C \pm 1 & 50% \pm 2 RH
3. Tolerances are based upon 95% Confidence limits of single mill measurements of conditioned random samples
4. All parameters are measured as per relevant TAPPI standards



FMCG



CONSUMER
ELECTRONICS



GARMENTS